

VC-B30U Firmware(FW) Upgrade

Warning :

Before upgrade, please check FW version of unit and update the FW accordingly.

Original FW version	New FW version
VHH_VHG_VHS_VHI_VHK	VHH_VHG_VHS_VHI_VHK
VAF_VAE_VHS_VAD_VAX	VAF_VAE_VHS_VAD_VAX

※ VHH_VHG_VHS_VHI_VHK can't upgrade to VAF_VAE_VHS_VAD_VAX due to the hardware limitation.

FW Check

- OSD Menu: [Status] > [FW version] on the last page.
- [USB PTZ Camera Controller] software: [Advance]> [FW version]




Version Difference:

FW Type	VC-B30U	VC-B30U,V01
USB	VHHxxx	VAFxxx
Master	VHGxxx	VAExxx
Motor	VHSxxx	
CM	VHIxxx	VADxxx
DSP	VHKxxx	VAXxxx

1 Device and Tool Preparation

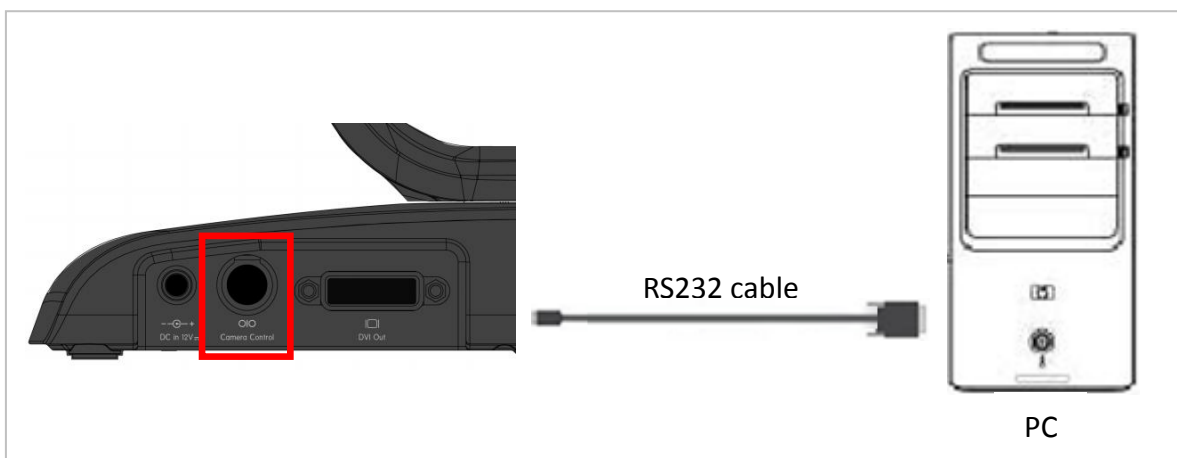
1.1 Please prepare following devices and tools before FW upgrade.

VC Model	PC with a RS232 port or Laptop
	
Mini Din-RS232 cable	RS232-USB cable (if connect with a laptop)
 <p data-bbox="197 999 759 1032">(9Pin D-Sub Female to 8P in Mini Din Male)</p>	
Monitor	Power adapter and power cord
	

2 Connections for FW upgrade

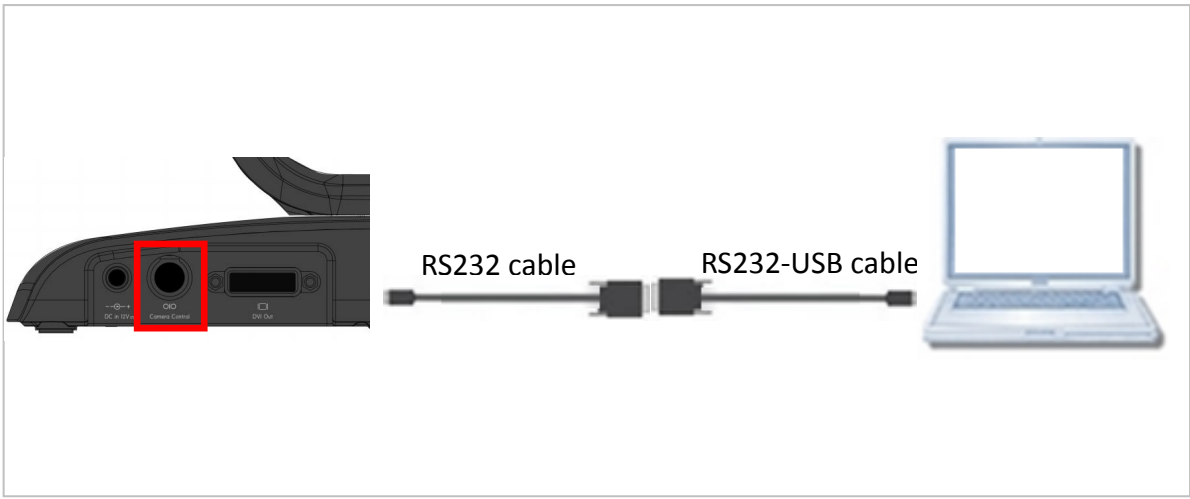
****Note:** Support: Windows Vista, Windows XP, Windows 7, Windows 8, Windows 10
The VC FW cannot be upgraded through MAC OS.

2.1 Connect the VC camera (RS232 Port) with a PC



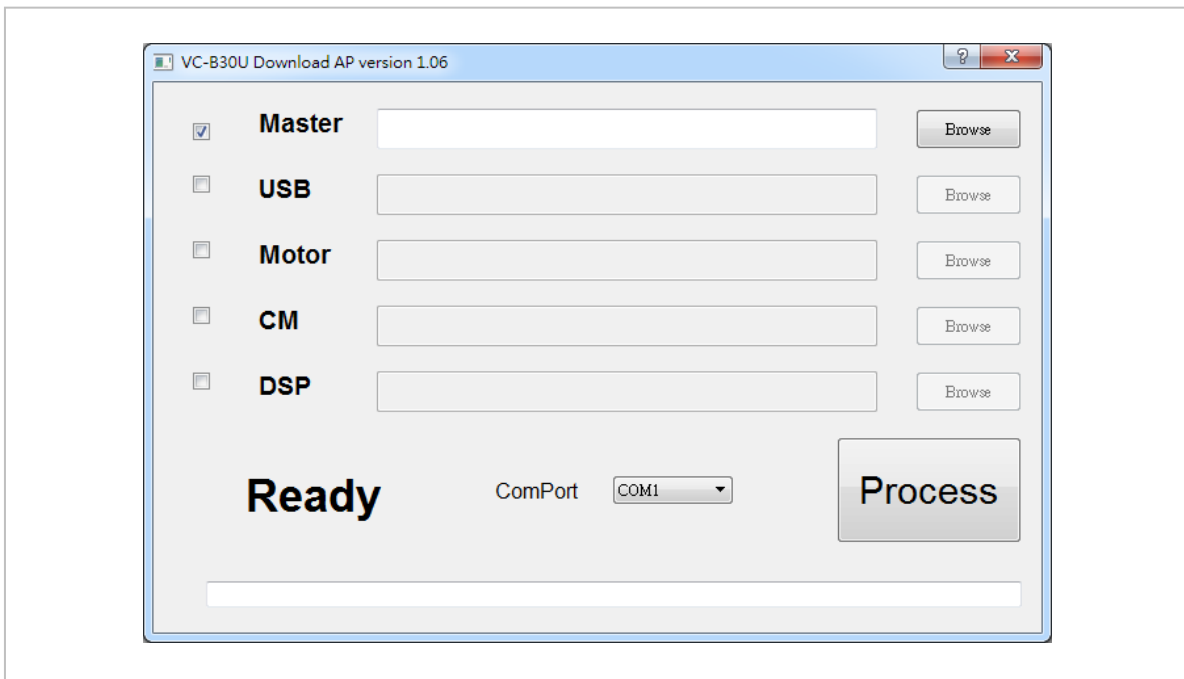
2.2 Connect the VC camera (RS232 Port) with a laptop

Need 2 cables: RS232 cable and RS232-USB cable

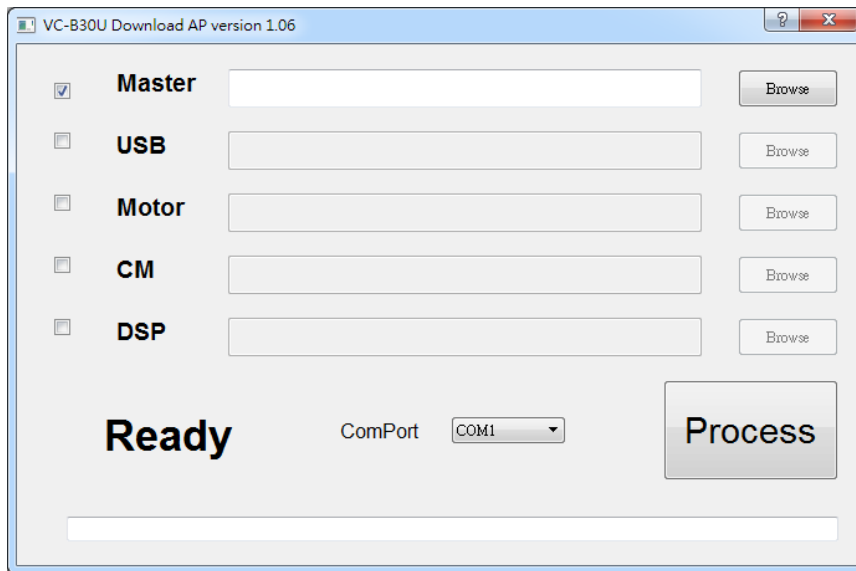


3 FW Update

3.1 Please download [Firmware Download Tool] from Lumens website.



3.2 Launch the [VC-B30U_Download_AP].



3.3 Browse and select proper FW file.

- Check the front box for updating FW. (Uncheck the box if no need to update specific FW file.)
- Go to **3. Current FW version check** to check the FW in the unit and upgrade with the same FW identified code.

	VC-B30U	VC-B30U,V01
USB	VHHxxx	VAFxxx
Master	VHGxxx	VAExxx
Motor	VHSxxx	
CM	VHIxxx	VADxxx
DSP	VHKxxx	VAXxxx



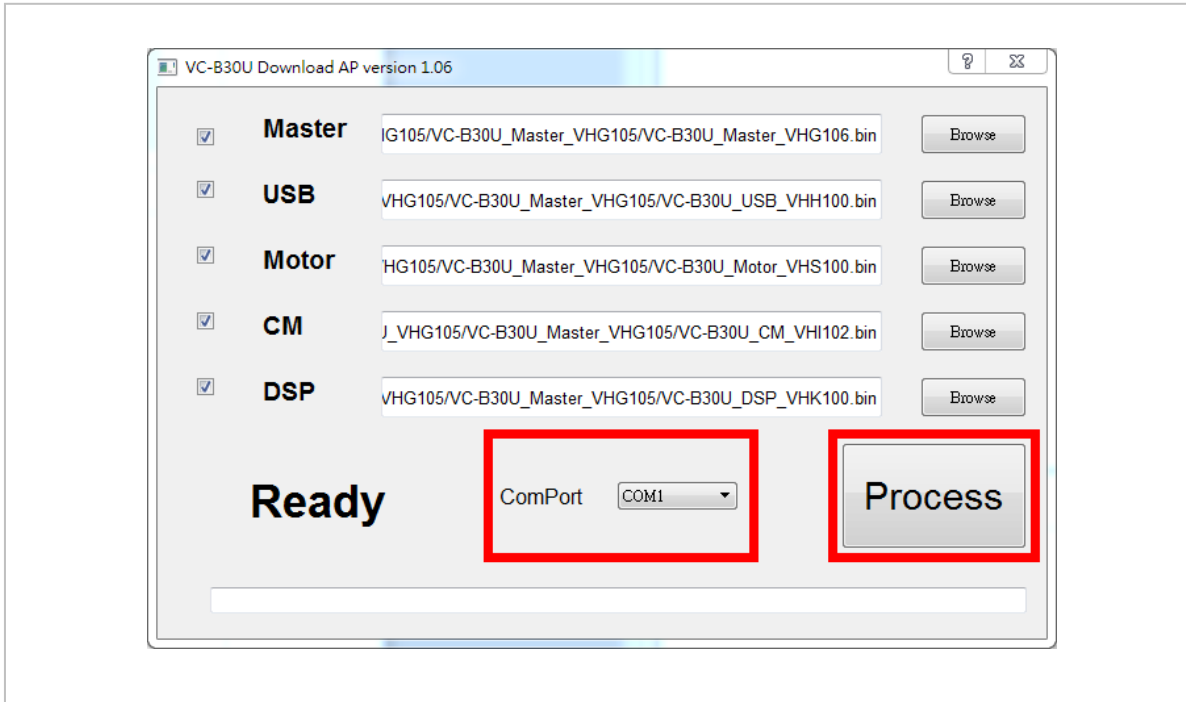
**Please be aware of the FW code when selecting FW file.
Wrong FW file will cause the unit shutdown.**

VC-B30U Download AP version 1.06

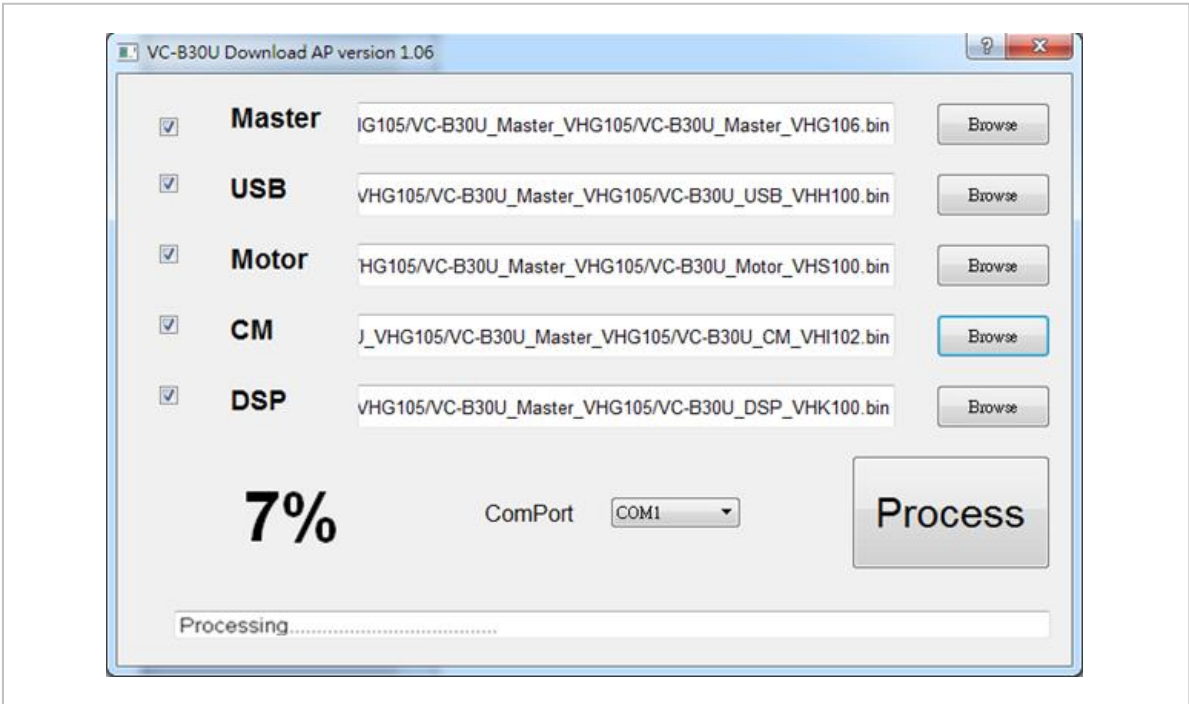
<input checked="" type="checkbox"/>	Master	IG105/VC-B30U_Master_VHG105/VC-B30U_Master_VHG106.bin	Browse
<input checked="" type="checkbox"/>	USB	VHG105/VC-B30U_Master_VHG105/VC-B30U_USB_VHH100.bin	Browse
<input checked="" type="checkbox"/>	Motor	HG105/VC-B30U_Master_VHG105/VC-B30U_Motor_VHS100.bin	Browse
<input checked="" type="checkbox"/>	CM	J_VHG105/VC-B30U_Master_VHG105/VC-B30U_CM_VHI102.bin	Browse
<input checked="" type="checkbox"/>	DSP	VHG105/VC-B30U_Master_VHG105/VC-B30U_DSP_VHK100.bin	Browse

Ready ComPort **Process**

3.4 Select proper [ComPort], and then press [Process] to start.



3.5 FW start updating. (Around 5min taken for the five FW update.)



3.6 After FW update, please unplug and reconnect the power cord to restart the unit.

3.7 Apply the factory reset to the camera

3.7.1 From the menu: [System]-->[Factory Reset]

3.7.2 From the software [USB PTZ Camera Controller]: [Advance] -->[Factory Reset]

